



Chippers' Chatter

Newsletter of the Chesapeake Gem & Mineral Society
Baltimore, Maryland <chesapeake.rockclub.us>
Volume 54 Number 1
January 2010

Who We Are:

The Chesapeake Gem & Mineral Society is a Member of the Eastern Federation of Mineralogical & Lapidary Societies and is Affiliated with the American Federation of Mineralogical Societies.

The Chesapeake Gem & Mineral Society was established in order to allow its members to gain knowledge and skills in various phases of the Earth Science field. Through field trips, exhibitions, and cooperation with other societies, we endeavor to further not only our own knowledge, but also that of the general public.

Meetings are held on the 2nd Friday of each month except August at the Women's Club of Catonsville, St. Timothy's Lane & Frederick Rd in Catonsville, MD. Meetings begin at 7:30 P.m. and visitors are always welcome.

Deadline for submitting articles or comments in this Newsletter is the 15th of each month.

Non-commercial reprint permission is granted to non-profit organizations unless otherwise noted. Copyrighted material can only be reprinted with the permission of the original authors in writing.

Weather Policy:

If Balto. County schools are closed on a meeting day, then our meeting is cancelled. Please listen to WBAL [1090 A.M.] or T.V. channel 11, or visit their website [wbaltv.com] to be sure.

President's Message: Date: December 19, 2009

The holiday party was a festive occasion thanks to Dawn and her elves. Thanks to all the club members who contributed the delicious food. For those of you who helped with the clean up, a special thanks.

May each of us have a healthy and happy New Year. See you at the January, 2010, meeting.

Gil

Goodies 'N Such

by Liz & Wendy Stanne

Many thanks to Dawn and the entire Johnson family for the wonderful holiday party on December 11th. We all appreciate their efforts to make it a special night ! The food was outstanding, as usual. We would also like to thank the people who helped with the set-up and clean up.

The following members have signed up to bring in the treats for our January meeting:

Richard Hoff
The Kays &
Liz Stanne

THE PROGRAM for the January 2010 meeting will be all about agates. We are going to do an extended show and tell style meeting were you are encouraged to bring in your agates be they, cut, rough, rare, self collected, antiques, jewelry items or just your favorites. Please be prepared to tell us a little about them.

Following this we will view a DVD Agates Close-up presentation. It is an interesting look at their creation, structure and beauty.

I know our club members have some of the best around. I can't wait to see what you've been hiding in the basement. or what's on the shelf in your living room.

Thanks, the program committee,

Richard Hoff
Tony Wilner
Keith Kaneda

+++++

Editor's Corner:

If you hear about a gem and mineral show that's not listed, please pass me that information so I can share with everyone. Thanks

As you will have noticed by now, I believe that anything and everything related to the Lapidary Arts, including drawing, drafting pictures, photographs of minerals or jewelry or even rock formations, and sometimes recipes and quips are grist for the newsletter.

Remember, only your articles and pictures will prevent me from using bad puns and jokes to fill in spaces!

Personals

I'm so glad that Becky was able to join us at the December holiday party.

Michael Hakulin Jr. is much better. He is well enough to be going out on his own.

Virginia White is also improving from her recent procedures. We hope she will be well enough to be back with us in Jan.

We had an exceptional holiday party this year, and many thanks go out to Dawn, Johnny, Rachael, Karl and Karin for the fabulous job they do in getting it all together; and making it look so special.

I hope everyone survived our very early December blizzard safely, and went on to celebrate the holidays with family and friends.

See you in 2010.

Lynne

+++++

Minutes

By Earle Pfetzing

The holiday meeting of the Chesapeake Gem & Mineral Society was called to order at 6:30 pm on 11 December 2009 at the Catonsville Woman's Club by President Gil Charleton. No business was conducted, but everyone had a fine time. The food was delicious.

Feature Articles

Minerals of the Month – Hydrated

Borates

by Steve Weinberger

There are about 45 borate species. These are minerals that have the element boron (B) in them. The hydrated (with water) borates are usually most interesting to collectors. They usually form in sedimentary deposits in the desert.

The listing of hydrated borates includes the following:

Kernite— $\text{Na}_2\text{B}_4\text{O}_7 \cdot 4\text{H}_2\text{O}$

Tincalconite— $\text{Na}_2\text{B}_4\text{O}_7 \cdot 5\text{H}_2\text{O}$

Borax— $\text{Na}_2\text{B}_4\text{O}_7 \cdot 10\text{H}_2\text{O}$

Ulexite— $\text{NaCaB}_5\text{O}_9 \cdot 8\text{H}_2\text{O}$

Colemanite— $\text{Ca}_2\text{B}_6\text{O}_{11} \cdot 5\text{H}_2\text{O}$

Inderite— $\text{Mg}_2\text{B}_6\text{O}_{11} \cdot 13\text{H}_2\text{O}$

Kurnakovite— $\text{Mg}_2\text{B}_6\text{O}_{11} \cdot 15\text{H}_2\text{O}$

Howlite— $\text{Ca}_2\text{SiB}_5\text{O}_9(\text{OH})_5$

You can see how similar they are, all having boron (B), oxygen (O), water (H_2O), and then either sodium (Na), calcium (Ca), or magnesium (Mg). Rather than looking at all eight, let's check out just a few.



*Borax
Searles Lake
San Bernardino
Co. CA*

Borax, whose name comes from the Arabic *buraq*, for "white", is monoclinic, but usually is in a massive form. You may remember the 20-mule teams that brought borax out of Death Valley, to be used as cleaning agents.

Ulexite (named for the German chemist George Ludwig Ulex) is triclinic. The usually acicular (needle-like) crystals elongate along the "C" axis. They can be transparent, so that if you have 2 polished ends, and put one end on a sheet of printing, you can read the words that appear on the top of the mineral. Ulexite is also called "TV stone" because of this property.



*Ulexite
Boron, Kramer Dist.
Kern Co. CA*

Howlite occurs in cauliflower-like masses. It absorbs dyes readily and when colored blue is often sold as turquoise since it is difficult for the average person to distinguish from true turquoise.



*Howlite
Tick Canyon, Lang
Los Angeles Co., CA*

Bring in your examples of these minerals to put on the table.

References:

Mineralogy for Amateurs, Sinkankas

Minerals and Their Localities, Bernard & Hysl

January Birthstone – Garnet Group

By Mary Fraser

From Rockin' Around, March 2005

via The Tidewater Prospector March 2007

Edited and Illustrated by M.S. Hakulin

The January birthstone is Garnet. Garnets are among the commonest minerals. They crystallize in the cubic system as 12-sided dodehedrons or 24-sided trapezohedrons or a combination of both. In ancient times garnets were called carbuncles. Ancient Egyptians valued them as ornamental stones and they were considered to be the bearers of well being and family harmony. Garnets are found on the Breastplate of Aaron. It is said these "stones of health" extract negative energy from the charkas and transmit it to the beneficial state.



Also known as the "stone of commitment" garnets monitor and adjust the flow of energy around the physical body and align the emotional and intellectual bodies. Garnet is also reported to enhance the assimilation of iodine, calcium, magnesium, and vitamins A, D, and E into the body. <<This paragraph is for the holistic healers among us. Ed>>

The garnet group is made up of silicate minerals with similar crystal structure. They have a hardness of 6.5 to 7.5, streak white, a luster vitreous, greasy, or resinous, and are transparent to opaque, coming in all colors except blue. They occur in gneiss mica schists, dolomitic metamorphic rocks, and frequently in sands. They are rare in igneous rocks. The occurrence is worldwide. Garnets are used as grinding and polishing agents and as gemstones.

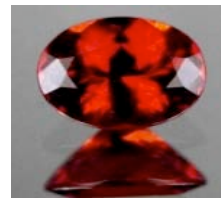


The garnet groups are divided into two series of minerals: the pyrospite series named after its three members pyrope, almandine, spessartite and the ugrandite series named after uvarovite, grossularite, and andradite. (They all have the same general chemical formula, $[A]_3[B]_2(SiO_4)_3$, where A can be calcium, magnesium, ferrous iron, or manganese, and B can be aluminum, ferric iron, or chromium, or in rare instances, titanium.)

Almandine: (iron-aluminum) common garnet. Forms in schist in areas of regional metamorphism. Colors are brown, red-violet, and almost black.

Andradite: (calcium-iron) occurs in metamorphic rocks. Colors are brown-black (melanite), colorless, green (demantoid), and yellow.

Grossularite: (calcium-aluminum) found in metamorphosed impure limestones and limey shales where aluminum is high and iron is low. Colors include colorless, green (tsavorite variety), yellowish, brown, red, and brown-orange (hessonite variety).



Pyrope: (magnesium-aluminum) also known as carbuncle, bohemian garnet, and cape ruby. Pyrope occurs in silica poor rocks such as kimberlites. Colors are red, brown-red, and the rose-red (rhodolite variety).

Spessartite: (manganese-aluminum) associated with manganese ores of metamorphic origins. Colors are yellow, orange, and red-brown.

Uvarovite: (calcium-chromium) origin is metamorphic. Its color is emerald green from chromium.

+++++

Field Trip Notes

By Dave Fordyce

I would like to address a couple of news items that I have become aware of.

Life continues to be more complicated these days for arranging field trips. More places are closed than ever before (including Manassas Quarry in Virginia). I have been told that the quarries are running scared because of the death of someone in a Virginia quarry last year (not a rockhound, but someone that did something stupid).

Some of the quarries that do remain open are instituting new requirements. One of these, Hunting Hill, now *requires* fluorescent vests to be worn in addition to all the mandatory safety gear (hard hats, steel toe boots, eye protection). Other quarries are moving in this direction. So, I would advise club collectors to go ahead and purchase their own vest and make it a permanent part of their gear.

On the good news front, I recently met with another field trip chairman and he indicated to me that there is a good chance we can get a club trip into Churchville Quarry in Fall of 2010. I also met with a LaFarge employee and inquired about the status of Medford. He told me it would be possible to get a trip in there in the Spring. That is good news for all of us collectors.

+++++

2010 Officers:

President: Gil Charlton, gilchar@msn.com, 410.296.8129

Vice President: John Buchleitner, jbuchl@verizon.net, 410.647.3917

Recording Sec’y: Earle Pfetzing, 410.465.0408

Corresponding Sec’y: Phyllis Dyer, Stevedyer2 @ verizon.net, 410.349.1630

Treasurer: Marilyn Cornish, mcornish23 @ yahoo.com, 410.719.2434

Directors: **2010-11** **2009-10**
 Steve Dyer Carolyn Weinberger
 Gary White Bernie Emery

Committee Chairs

- Auctions - Lynne Luger & Bernie Emery
- Directory - Phyllis & Steve Dyer
- Field Trips - Dave Fordyce
- Greeters - Al Pribula, & Earl Pfetzing
- HOLIDAY Party - Dawn , Rachel, Karl & Karin Johnsson
- Hospitality - Liz & Wendy Stanne
- Legislation - Dave Fordyce
- Library - Tony Wilner
- Mineral of the Month - Steve Weinberger
- Personals/Announcements/ - Patricia Smith & Lynn Luger
- Robinson Award - Patricia Smith, Richard Hoff, & Elizabeth Stanne
- Sunshine Pgms - Richard Hoff, Keith Kaneda & Tony Wilner
- Safety - Johnny Johnsson
- Show - Bernie Emery & Lynne Luger
- Showcase - Steve Dyer

Editor:

Michael S. Hakulin Sr <haksdad@aol.com>
410.987.1239 Fax 410.987.0736
8240 Ahearn Rd., Millersville, MD 21108

Emergency Telephone Chain:

Lynne Luger 410-832-5906
Liz Stanne 410-486-3774
Mary Chandler 301-663-8348
Wendy Stanne 410-486-4018
Phyllis Dyer 410-349-1630
Dawn Johnsson 410-833-5508

Tips & Tidbits

Taken from the annuals of the *Rochester Lapidary Society Newsletter, December, 2009*

For more Comfortable Cab Cutting—Is the edge of your cab machine water trough sharp? When you’re cutting a cab, does the edge dig into your wrist or arm? Here’s an easy and inexpensive solution to end your discomfort. Get a piece of foam pipe insulation from the hardware store and place a piece of it over the edge of the trough. Voila, no more discomfort! And, you can easily remove the foam when you go to empty or clean the trough (from Gem Cutters News 6/08 via The Rockhounder 11/09).

Working with Dark Colored Moss Agate—like the black Montana variety, small pits may some times appear on the finished, polished surface. The light colored polishing powders, such as tin oxide or cerium oxide, often pack into these small pits, making removal difficult and white spots surely distract from the stone’s appearance. Try rubbing a small bit of black India ink into the spotted area, and then try to rob off the ink. The white spots will disappear (from Rockhound Rambling 9/08 via Quarry Quips 8/09).

Keeping Ivory in Light— Don’t put ivory in the dark! It is one substance that needs light. If it has started to yellow, take half a lemon and rub it in some salt. Then rub it over the ivory object. The lemon will work on the yellow discoloration. After it is dry, dampen a soft cloth with lukewarm water, and rub the ivory
All via 12/09 Pick & Pack



Dues Renewal

Please complete this form and include it with your membership renewal

Date: _____

Cash: _____

Check: _____ Check #: _____

Individual (\$10) _____ Husband & Wife (\$15) _____ Family (\$20) _____

Names of Members: _____ Birthday (M/Day) _____

Hobby Interests (see below): _____

_____ Birthday (M/Day) _____

Hobby Interests (see below): _____

_____ Birthday (M/Day) _____

Hobby Interests (see below): _____

_____ Birthday (M/Day) _____

Address: _____

City: _____ State: _____ Zipcode: _____

Telephone: _____ E-mail: _____

Hobby Interests: (Please use numbers in the spaces above)

1. Lapidary 2. Jewelry 3. Minerals 4. Fossils 5. Microminerals 6. Field Trips

Mail or give to Marilyn May Cornish, 2001 Devere Ln; Catonsville, MD 21228-4803

Chippers' Chatter
 Mike Hakulin, Editor
 8240 Ahearn Rd
 Millersville, MD 21108



Table of Contents		<u>2010 Calendar of Events</u>	
Upcoming Meetings & Shows	1	January	8 – Regular Meeting
Goodies ‘N Such	2	February	12 – Regular Meeting
Personals	2	March	12 – Auction
Minutes	3	April	9 – Regular Meeting
Feature Articles	3	May	14 – Regular Meeting
Mineral of the Month	3	June	11 -- Auction
Tourmalines and Varieties	4	July	9 – Club Picnic
November Birthstone – Topaz	4	August	<i>Summer vacations -- No meeting</i>
Roughing Out for Size and Weight	6	September	10 – Regular Meeting
2009 Officers & Committees	6	October	8 – Auction
Picture of the Month	6	November	12 – Election of Officers
Dues Renewal Form	7	December	10 -- HOLIDAY PARTY
2010 Calendar	8		