



Chippers' Chatter

Newsletter of the Chesapeake Gem & Mineral Society
Baltimore, Maryland <chesapeake.rockclub.us>
Volume 53 Number 03
March 2009

Winter Weather Policy

If Baltimore county schools are closed on a meeting day, then our meeting is cancelled. Please listen to WBAL [1090 A.M.] or T.V. channel 11, or visit their website [wbalv.com] to be sure.

Last Chance to Get into the 2009 Directory!

It's DUES TIME again! The price is still the same ---CHEAP! Please use the renewal form included in the newsletter last month. Dues are \$10 for individuals, \$15 for husband and wife, and \$20 for family memberships.

Thank you in advance... Your Treasurer, Marilyn May Cornish

+++++

Who We Are:

The Chesapeake Gem & Mineral Society is a Member of the Eastern Federation of Mineralogical & Lapidary Societies and is Affiliated with the American Federation of Mineralogical Societies.

The Chesapeake Gem & Mineral Society was established in order to allow its members to gain knowledge and skills in various phases of the Earth Science field. Through field trips, exhibitions, and cooperation with other societies, we endeavor to further not only our own knowledge, but also that of the general public.

Meetings are held on the 2nd Friday of each month except August at the Women's Club of Catonsville, St. Timothy's Lane & Frederick Rd in Catonsville, MD. Meetings begin at 7:30 P.m. and visitors are always welcome.

Deadline for submitting articles or comments in this Newsletter is the 15th of each month.

Non-commercial reprint permission is granted to non-profit organizations unless otherwise noted. Copyrighted material can only be reprinted with the permission of the original authors in writing.

Table of Contents

2009 Calendar of Events	1
President's Message	1
Goodies 'N Such	1
Personals	2
American/Eastern Federation News	2
Field Trips	3
Minutes	3
Legislative News	3
Feature Articles	4
Tucson 2009 – Special	5
For Sale By Members	6
Recipe of the Month	7
Quotable Quips	7
Upcoming Meetings & Shows	7
2009 Officers & Committees	7
Editor's Corner	8
Photo Gallery	8

2009 Calendar of Events

March	13 - Club Auction 21-22 Gem-Mineral-Fossil Show* 21 - Gem, Mineral & Fossil Show* 27-29 Micromounters Conference*
April	10 - Regular Meeting 17-23 EFMLS Wildacres Workshop*
May	8 - Regular Meeting 23 - Chesapeake Gem & Mineral Show*
June	12 - Club Auction
July	10 - Picnic Meeting
August	-- No meeting --
September	11 - Regular Meeting 7-13 - 2 nd Session Wildacres*
October	9 - Club Auction
November	13 - Regular Meeting
December	11 - Holiday Party

*See Show Information, page 6

+++++

Goodies 'N Such

by Liz & Wendy Stanne

Everyone enjoyed the Valentine's Day Goodies brought in by our great members. Not a crumb was left by the end of the night! Thank you for the tasty treats!

The following members are scheduled to supply the refreshments for our March Auction:

Mary Chandler Phyllis Dyer
Arleen Gleason Patricia Smith

President's Message:

After Richard's presentation at the last club meeting, we all know who we will be going to have customized jewelry created. Richard's presentation, with added humor, was very captivating. His creations are quite unique and very beautiful. Now we can really appreciate all of the creativity and work that goes into designing and producing one of a kind jewelry.

Please remember to bring \$ for the March auction. I am sure there will be many great specimens and equipment to bid on. Going once, going twice, see you at the auction.

Gil

Personals

In early February Marilyn May Cornish's mother passed away. Evidently her mother lived out of town and this happened last week which is why Marilyn was not at the February meeting. Neither Liz, Earl or Lynne knew if this was sudden or something that was expected, but coming so soon after the death of her son, must be really difficult for her. For those wishing to send cards to Marilyn, her address is

**2001 Devere Lane
Catonsville, MD 21228-4803**

Although they were not at the meeting, we understand that both Ray and Theresa are doing much better.

Phyllis Dyer underwent kidney surgery in Jan. and she is already back to work. We are very glad there were no complications for her.

Leslie Meszler had open heart surgery in February. The surgery itself went well, but she developed complications from pneumonia. We hope by now that she is well on her way to recovery.

Special thanks to Phyllis Dyer for her English Plum Pudding recipe. (Sarah)

+++++

Field Trip Announcements

General Instructions for all trips:

1. **No attendee under 16.**
2. **All safety equipment required (hard hats, steel-toed boots, eye protection, gloves)**
3. **Quarries do not allow collecting under high walls.**
4. **Usually there will be a safety instruction talk before collecting that all are required to attend and sign off on, including release of liability.**
5. **Obey all quarry directives strictly.**

Trip 1. Tentative: SATURDAY MARCH 14, 2009, 10:00 A.M.: Cornwall Materials Quarry, Cornwall, Lebanon Co., PA

((Trip has been arranged, but will be confirmed at end of February.))

Trip 2. Tentative dates for collecting at Hunting Hill Quarry (Rockville MD) have been achieved by Fred Parker. They are all Sunday mornings, meeting at 8:15 am. Dates are 29 March, 19 April, and 17 May. Chip-in fee of \$5.00.

Trip 3. SATURDAY APRIL 18, 2009, 9:00 A.M. TO NOON. LAFARGE MARRIOTTSTVILLE QUARRY, 11411 Marriottsville Road, Marriottsville, MD 21104.

Register by email with your field trip leader well in advance, because we must advise the quarry of the expected attendance.

David Fordyce

Eastern Federation News

Future Rockhounds of America

A little bit of History

Rock hound clubs throughout the Federations have been supporting youth groups for many years. Most clubs have always had young members but often didn't know what sorts of activities to provide for them. Consequently many youth fell through the cracks. We're sure no one would argue the fact that we need to ensure the future of our hobby by encouraging our youth. Knowing this, under the direction of AFMS President Bill Cox in 1984, a committee was added to the AFMS called "Junior Clubs."

Bill Cox coined the name "Future Rockhounds of America (FRA)" and designed a certificate to be given to junior clubs becoming members of FRA. It gives pebble pups and juniors the distinction of belonging to something worthwhile. The only requirement for obtaining FRA membership is to be organized and sponsored by a regional federation club (although exceptions can be made). There are no dues to pay to AFMS.

Starting in Fall 2004, Juniors Activities Chair Jim Brace-Thompson developed a free badge program of guided activities to provide youth leaders with 53 individual activities in 9 areas: Rocks & Minerals, Earth Resources, Fossils, Lapidary Arts, Collecting, Showmanship, Communication, Field Trips, and Leadership.

In 2008, 6 new areas were added with 32 more activities on Earth Processes, Earth in Space, Gold Panning & Prospecting, Gemstone Lore & Legend, Stone Age Tools & Art, and Rocking on the Computer. Kids can now earn badges in each of 15 overall areas. Those earning a minimum of 6 of the 15 badges earn a "Rockhound" badge as a mark of accomplishment and distinction. Details of the program may be found on the "Kids Corner" section of the AFMS web site: www.amfed.org/fra/meritbadge.htm.

HOW TO BECOME A MEMBER OF THE AFMS YOUTH PROGRAM, FUTURE ROCKHOUNDS OF AMERICA?

All you need is a group of kids, a sponsor, a name, and an application to FRA!

REQUIREMENTS:

1. Your group must be a member of your regional federation, either through a sponsoring club or through an independent application into your local federation.
2. The number of youth is not important: you can have as few as 2 and as many as you can handle.
3. Age: any kids up to the age of 18.

Just contact your regional federation Juniors Chair or check out the "Kids Corner" of the AFMS web site (www.amfed.org).

Download and fill out the application and provide a brief description of the activities you already do with your youth members, i.e., participation at meetings, club shows, field trips, and other activities. After completion of this questionnaire, please forward it to the AFMS Juniors Activities Chair: Jim Brace-Thompson, 7319 Eisenhower Street, Ventura, California 93003; (805) 659-3577; jbraceth roadrunner.com

Minutes

Submitted by Earle Pfetzing

The meeting was called to order at 7:41pm at the Catonsville Woman's Club on 13 February 2009 by Gil Charleton, President. Approximately 65 members and 2 guests were in attendance.

The president welcomed members and guests to the meeting, and the guests were introduced. Mike Hakulin was thanked for his efforts as newsletter editor, since taking over recently. It was announced that Richard Hoff would be presenting the night's program, which was a talk and slide presentation on his jewelry design and crafting. The president then called for committee reports:

Treasurer: There was no treasurer's report, as the treasurer was absent. It was later learned that her mother, who lived out of town, had passed away.

Legislation: A bill to stop fossil collecting on federal lands has re-emerged and has already passed the senate. It is called "Senate Omnibus Bill 22, Public Land Management Act of 2009." It is now at the "house desk," to enter there soon and perhaps be debated. The bill does not directly affect gem and

mineral collecting, but is thought to be a "pandora's box" which will lead to the cessation of all collecting on federal lands. Members were asked to write their representatives and complain.

Field Trips: Dave Fordyce has presented a list of upcoming field trips. <<See article in this issue.>>

Newsletter: The editor announced that he is starting a "Photo Gallery" and asked for submissions.

Hospitality: Liz Stanne reported that the hospitality sign-up list for 2009 is full.

Programs: Tony Wilner said that next month there will be an auction. Bernie Emery reiterated to contact him if you have anything you want to sell.

New Business: Show Chairman Bernie Emery reported that the Club's May show is expected to be at the Ruhl Armory; which is on York Road at Route 695. The buy-sell and Swaps show of mainly gems and minerals will be on Saturday, May 23rd from 10 am to 4 pm. HOWEVER, Bernie said he has not yet received a firm contract for that date.

Mineral of the Month: The mineral of the month for January was Siderite, an oxide of iron and specimens from Al Pribula, Dave Fordyce, Mike Hakulin and others were displayed. Locales included Bolivia, Greenland, Russia, Frostburg MD, and Arbutus in Baltimore County.

Showcase: Richard Hoff, Barry Berlin, Steve Dyer, and Mike Hakulin displayed gold and silver jewelry with many different shapes.

The meeting was adjourned at approximately 9:40 pm.

Program: Rich Hoff, a very talented jewelry designer and fabricator conducted a very interesting program. He gave a brief personal history and then showed a series of slides depicting many of his most interesting pieces.

Legislative News

Omnibus Public Land Management Act of 2009

By Dave Fordyce

As I discussed at last week's Chesapeake meeting, the Omnibus Public Land Management Act of 2009 (S22) has been passed by the Senate and is "at the desk" of the House.

I received an email late in the week that the bill is likely to go to a vote on the floor of the house after Feb 23. This bill contains much of the same language as previous years' "Paleontological

Resources Protection Act." It may be found in Title VI, Subtitle D of S22. The bill permits "reasonable amount of common invertebrate and plant paleontological resources for non-commercial use.."

The bill requires that "a paleontological resource may not be collected from Federal land without a permit..." The criteria for issuing the permit are "the applicant is qualified to carry out the permitted activity, the permitted activity is undertaken for the purpose of furthering paleontological knowledge or for public education..."

The bill also requires that "every permit shall include requirements that the paleontological resource that is collected from Federal land under the permit will remain the property of the United States, will be preserved for the public in an approved repository, and that specific locality data will not be released by the permittee or repository without the written permission of the Secretary."

The thrust of the Paleontological Resources Protection Act used to be for vertebrate fossils, e.g., bones, sharks teeth, trackways, etc. The language of this bill makes no such distinction. The bill refers to "False Labeling Offenses - A person may not make or submit any false record, account, or label for, or any false identification of, any paleontological resource excavated or removed from Federal Land.

The bill refers to civil penalties (fined in accordance with title 18 USC, or imprisoned not more than 5 years or both -- 2 years if imputed value of the item is less than or equal to \$500).

Why you should care - "Public lands" make up a sizeable portion of the United States - most of the West, and almost all of Alaska. That's a huge area to put under lock and key, which this bill does.

This bill will put a very large reporting requirement on mineral/fossil dealers and on individual collectors. The way I read this, you will have to prove to the Government that your items were not collected in violation of the law. As I stated in the meeting last Friday, I am inventorying any vertebrate fossils that I now possess (photographing, getting inventory notarized) as a form of self protection.).

If you think you are safe because you only collect minerals, or invertebrate fossils, think again. They're next.

What you can do. The Omnibus Public Land Management Act of 2009 is likely to pass the House. Contact your Congressman and ask that **Title VI, Subtitle D** be removed from the bill. Tell your Congressman that you will track this vote and hold him/her accountable for it. Call them on the phone and write letters to them.

Once it passes, the only avenue left is to fight it out through the regulatory process, and as I have quoted above from the bill, that does not leave much wiggle room.

New Cache of Fossils Found

from an article in the *Los Angeles Times*, Feb. 22, 2009

The largest known deposit of fossils from the last ice age has been found during construction of an underground parking lot near the famed La Brea Tar Pits in Los Angeles. Researchers from the Page Museum at La Brea Tar Pits have begun extracting fossils from the sandy, tarry soil and expect the find to double the size of their current collection!

Already unearthed is the nearly 80% complete skeleton of a mammoth, plus a huge cache of snails, clams, fish, gophers and plants. Because of time constraints, researchers are removing huge blocks of material and placing them in storage for later study.
Carolyn Weinberger

Feature Articles

March Birthstone – Aquamarine

Compiled by Mike Hakulin

Aquamarine is the birthstone for March, and it is commonly recognized as the Zodiac stone for the constellation of Scorpio (although it is usually referred to as beryl in this regard). It is mentioned in

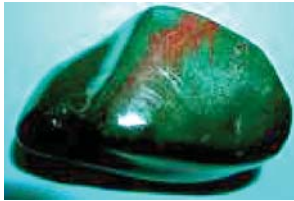
the bible as beryl. Aquamarine is the blue, or perhaps more correctly, blue-green or aqua variety of the mineral. Its name is derived from the Roman word "Aqua," meaning water, and "mare," meaning sea, this pale

blue gem does indeed resemble the color of seawater.

Aquamarine is colored by trace amounts of iron, and most gem aquamarines have been heat treated to produce the popular blue-green colors



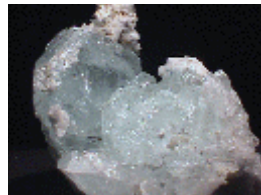
from less desirable yellow or pale stones. The majority of Aquamarines, unlike other gemstones, are flawless. It is a relatively abundant gem, the largest deposits being in Brazil, but other sources of Aquamarine are in China, India, Australia, Africa, and the United States.



The traditional birthstone is Bloodstone, a dark green opaque quartz flecked with red spots, which is extremely affordable. The mystical birthstone is Jade which is a favorite stone among several Asian cultures.

Other birthstones for the month of March are jasper, and opal. The Zodiac signs of Pisces and Aries include five additional stones: amethyst, sapphire, ruby, diamond, and topaz.

Aquamarine is sometimes found in huge crystals (unlike emerald). It is also known in a glassy form, often without showing crystal form, and sometimes with many holes or other odd shapes. Other times a large cluster of prismatic crystals can be seen to all have the same alignment - a sign that it is really a single crystal with many faces.



((<http://mineral.galleries.com/minerals/GEMSTONE/AQUAMARI/birthmar.htm>; <http://www.about-birthstones.com/marchbirthstone.html>; <http://www.jewelrystore.com/birthstones/march.html>; <http://www.minerals.net/gemstone/gemstone/aquamari/aquamari.htm>))

Tucson Shows – 2009

by Steve Weinberger

Since the March meeting will be an auction, there will not be a mineral-of-the-month table. So for this month's article, I would like to describe the "Tucson Experience." Carolyn and I just returned from eleven days in Tucson visiting various shows and I would like to briefly explain what the experience is like.

Trying to explain the Tucson experience to anyone who has never attended is almost like trying to describe Earth to an alien who has never come here. There are about 45 officially listed shows in town and who knows how many other ones that just spring up on street corners and empty parking lots.

Many of the shows are centered on themes such as minerals, fossils, beads, or jewelry; but there are shows, which feature every aspect of the hobby. The strip along I-10 runs for about a mile-and-a-half and each hotel or lot has a show where you can find all of the above-mentioned items.

Prior to Tucson, Quartzite is host to a gigantic gathering where, again, you can find all sorts of hobby-related items. The entire gamut of shows, then, runs from mid-January to mid-February. Many years ago there was the Rock-a-mania field trip extravaganza for collecting in Arizona and New Mexico, which ran for three more weeks after the "main" show. This meant that you could indulge in the hobby from mid-January into March.

The "main" show mentioned above is the one sponsored by the Tucson Gem & Mineral Society and is always held during the second full weekend in February and runs from Thursday through Sunday. There are about 250 dealers on the floor of the Convention Center selling everything you could possibly imagine for the hobby (except for equipment which can be found at Electric Park.) The top mineral dealers bring their finest specimens from micros to large museum pieces, and jewelry and fossil vendors wow the public with their wares.

The highlight of the show however, are the displays brought by museums, clubs and individuals. This year's theme was mineral oddities, which includes pseudomorphs, unusual combinations, and the just plain weird examples.

Two examples of the latter were a mineral-encrusted tennis shoe and a pseudomorph of calcite after banana.



The club show also features symposia, a micro-mineral conference, and banquet. Since the dates are fixed, the printed schedule runs through the year 2020. If you plan on going next year, make your hotel reservations early because reasonably priced rooms tend to go fast. You can always cancel if your plans

change. Airline schedules are usually not posted this early.

Colored Stone Takes a Look at Tucson 2009

Dateline: Feb. 10, 2009 -- [Survival School](#)

This year Tucson is “more about hard knocks than rocks as attendees use it as a life coach to learn to outlast the troubled present,” according to the lead article in Colored-Stone GemMail.

Living up to its reputation as a “harbinger of things to come,” the annual Quartzsite Show cast its “shadow of desperation” on this year’s proceedings at Tucson; and in the words of one seller it was a “bottom fisher’s market.” A lot of sellers had to lug their wares to Tucson in hopes that the Asian buyers would loosen their purse strings.

According to Colored Stone, the mood this year was more of a “sober retreat than a festive meet as sales and attendance dropped in tandem due to rampaging recession and consequent deflation.”

As the market became tighter, more and more buyers turned to alternate metals and lesser known stones—seeking glitter and color. Rather than a “\$5,000 per carat fine pink spinel,” a dusty-rose or salmon-pink “Kenyan zircon for under \$100 per carat.”

For further information, see Colored-Stone GemMail issues for 27 January and 10 February 2009.

Star Stones

By Douglas L. Hoffman

The optical phenomena of some gem materials to display a single ray of light on their surface is called chatoyancy, a French word meaning cat or cat’s-eye.

Gems displaying this characteristic exhibit a single undulating narrow band of white light with a changeable luster. Another optical effect is shown when some gem material exhibits more than one ray of light. These rays will cross or intersect each other



at some central point or points on the surface of a cut and polished gem. This phenomena is called asterism or is more commonly known as a star—be it 4 or 6-rays.

The cause of asterism or chatoyancy is attributed to tubes, or needlelike inclusions within the gem. When these foreign inclusions are highly in alignment within the gem, they will be capable of concentrating and reflecting or transmitting the light which enters the gem. However, this potential will not be effectual in the form of a ray or rays if the gem does not have the optical shape necessary for focus and magnification of light. When the foreign inclusions are aligned only in one direction with the gem, a single ray of light will be possible. If the alignment is in two directions, then the gem will have the potential of emitting two rays of light will intersect each other at a central point of points on the gem creating a star with four legs. When the alignment is in three directions, “three fold symmetry,” three intersecting rays can be emitted which will produce a six legged star.

Gem materials which are capable of displaying a ray or rays of concentrated light will usually show some indication of this phenomenon in the form of a satin sheen or silkish luster while in the rough state and when exposed to an incandescent type of light. The area in which the sheen or silk is most intense will usually yield a star or cat’s-eye effect. This area should be tested with a testing fluid such as STP motor oil and marked prior to shaping. The gem is shaped so that this area will become the approximate apex of the gem’s dome or curved surface. Approximate is mentioned because the ray or rays will tend to shift their location slightly as shaping progresses. This shifting is attributed to the relationship between the gem’s physical shape and optical properties. Any change in the physical shape of the gem will also exert a change in directions, focus and magnification of the ray or rays. Special care and star-making cups must be used when lapping the stones in order to achieve the desired effects.

Read up on this technique before attempting to cut a star stone.

Source: “Star Gems” – author Douglas L. Hoffman, copyright 1967 From The Opal, 10/07, Via the Rochester Lapidary Society Rock Collector Dec 2007

+++++

September 7 – 13: 2nd EFMLS
Wildacres Workshop. Speaker in
residence – Brenda Foreman

Mary Chandler 301-663-8348 Wendy Stanne
410-486-4018
Phyllis Dyer 410-349-1630 Dawn Johnsson
410-833-5508

2009 Officers:

President: Gil Charlton, gilchar@msn.com,
410.296.8129

Vice President: John Buchleitner,
buchl @ Comcast.net, 410.647.3917

Recording Sec'y: Earle Pfetzing,
410.465.0408

Corresponding Sec'y: Phyllis Dyer,
stevedyer4 @ junos.com, 410.349.1630

Treasurer: Marilyn Cornish,
mcornish23 @ yahoo.com,
410.719.2434

Directors: 2009 2009-10
Steve Dyer Carolyn Weinberger
Gary White Bernie Emery

Committee Chairs

Auctions - Lynne Luger & Bernie Emery

Directory - Lloyd & Arlene Gleeson

Field Trips - Dave Fordyce

Greeters - Ray Petrisko, Al Pribula, & Earl
Pfetzing

Hospitality - Liz & Wendy Stanne

Legislation - Dave Fordyce

Library - Tony Wilner

Mineral of the Month - Steve Weinberger

Personals/Announcements/ - Patricia Smith &
Lynne Luger

Robinson Award - Patricia Smith, Richard Hoff,
& Elizabeth Stanne

Sunshine Pgms - Richard Hoff, Keith Kaneda &
Tony Wilner

Safety - Johnny Johnsson

Show - Bernie Emery & Lynne Luger

Showcase - Steve Dyer

Editor:

Michael S. Hakulin Sr <haksdad@aol.com>
410.987.1239 Fax 410.987.0736
8240 Ahearn Rd., Millersville, MD 21108

Guest Editor:

Carolyn Weinberger <cscrystals2@verizon.net>
410.833.7926

Telephone Chain (This will be increasingly
important during the Winter months):

Lynne Luger 410-832-5906 Liz Stanne
410-486-3774

Editor's Corner:

*If you hear about a gem and
mineral show that's not listed below,
please pass me that information so I can
share with everyone. Thanks*

Photo Gallery:

Teaching for a Merit Badge:



The Classroom:



The Students:



Ray Petrinko

We were saddened to learn that long time member Ray Petrinko passed away on March 3.

Before suffering from an assortment of illnesses Ray always attended meetings and served as one our greeters at meetings. He will be remembered for his warm smile, terrific personality and knowledge of the hobby which he gladly shared.

Ray is survived by his companion, Teresa Sanchez, five children and two grandchildren.

Services for Ray will be held on Saturday, March 7 at 4 p.m. at the McCully-Polyniak Funeral Home, 3204 Mountain Rd; Pasadena. The family will be also receive friends at the Funeral Home on Saturday from 3 – 5 and 7 – 9 pm.

The family asks that contributions be made to the American Heart Association. Cards can be sent to Teresa and/or the family at:

7883 Crilly Rd #467
Glen Burnie, MD 21060



Chippers Chatter
Mike Hakulin, Editor
8240 Ahearn Rd
Millersville, MD 21108

Dues Renewal

Please complete this form and include it with your membership renewal

Date: _____

Cash: _____

Check: _____ Check #: _____

Individual (\$10) _____ Husband & Wife (\$15) _____ Family (\$20) _____

Names of Members: 1. _____ Birthday (M/Day) _____

Hobby Interests (see below): _____

2. _____ Birthday (M/Day) _____

Hobby Interests (see below): _____

3. _____ Birthday (M/Day) _____

Hobby Interests (see below): _____

4. _____ Birthday (M/Day) _____

Address: _____

City: _____ State: _____ Zipcode: _____

Telephone: _____ E-mail: _____

Hobby Interests: (Please use numbers in the spaces above)

1. Lapidary 2. Jewelry 3. Minerals 4. Fossils 5. Microminerals 6. Field Trips

Mail or give to Marilyn May Cornish, 2001 Devere Ln; Catonsville, MD 21228-4803